



PRESSURE WASHER CENTER CATALOG

BRASS QUICK
coupling

HIGHER PSI RATING
WASHER

WASH SOAP CHISELING FLUSHING BLASTING
brass quick connect spray nozzles



TOOLS
for the trade

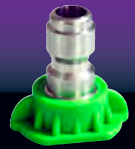
o rings
TAPE HOSES
TURBO nozzle
SEWER NOZZLE

HIGH PRESSURE HOSE



Professional

PRESSURE WASHER PARTS



The K-T Team would like to thank you *for choosing our company. Every employee at K-T has worked diligently to bring you, our customer, the best programs available. We know that you, as a prudent buyer, are looking for quality products at affordable prices!*

Our goal is complete customer satisfaction. We have listened to your concerns, we have heard your comments, and we have designed a program to fit your individual store needs.

We know you are looking for a broad selection, innovative packaging, UPC bar coding, effective merchandising, prompt customer service and a program that is as easy to buy as it is to sell! Join the long list of customers that have discovered the K-T advantage.

***Compare for yourself.
For quality, service and price, K-T delivers!***

TABLE OF CONTENTS

Screw Couplings and Nipples.....	3
Quick Connect Spray Nozzels.....	4-5
Multi-Regulator Nozzles	5
Sewer Nozzles.....	6
Brass Nipples	7
Quick Connector Couplers and Plugs	8-9
Spray Guns and Spray Lances.....	10
High Pressure Hoses.....	10-11
O Ring Kits and Teflon Tape	11



SCREW COUPLINGS AND NIPPLES

Screw Coupling, M22F to 1/4" Female NPT

Model No. 6-7020

M22F to 1/4" Female NPT. Used anywhere high pressure connections are frequently assembled and disassembled. Easily hand tightened; ideal for connecting hoses together. Connects to all of the most common 1/4" pressure washer equipment in the industry and converts M22 metric thread size to standard thread size. 300° F and 5,800 PSI.



Screw Coupling, M22F to 1/4" Male NPT

Model No. 6-7025

M22F to 1/4" Male NPT. Used anywhere high pressure connections are frequently assembled and disassembled. Easily hand tightened; ideal for connecting hoses together. Connects to all of the most common 1/4" pressure washer equipment in the industry and converts M22 metric thread size to standard thread size. 300° F and 5,800 PSI.



Screw Coupling, M22F to 3/8" Female NPT

Model No. 6-7022

M22F to 3/8" Female NPT. Used anywhere high pressure connections are frequently assembled and disassembled. Easily hand tightened; ideal for connecting hoses together. Connects to all of the most common 1/4" pressure washer equipment in the industry and converts M22 metric thread size to standard thread size. 300° F and 5,800 PSI.

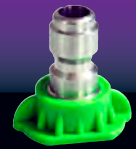


Screw Coupling, M22F to 3/8" Male NPT

Model No. 6-7026

M22F to 3/8" Male NPT. Used anywhere high pressure connections are frequently assembled and disassembled. Easily hand tightened; ideal for connecting hoses together. Connects to all of the most common 1/4" pressure washer equipment in the industry and converts M22 metric thread size to standard thread size. 300° F and 5,800 PSI.





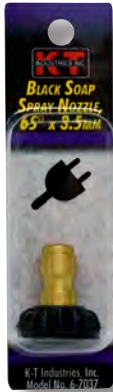
QUICK CONNECT SPRAY NOZZLES

5 Piece Spray Nozzle Assortment

Five piece orifice quick connect spray nozzle set. Includes 0° blasting (red), 15° chiseling (yellow), 25° flushing (green), 40° washing (white) and 65° soap (black) nozzles. Designed for a 1/4" quick coupler and ideal for quick exchange of spray nozzle and spray guns. Connects to all of the most common pressure washer equipment in the industry. 300° F. 4,000 PSI.



Model No.	Size	Use	PSI
6-7036	3.5	Electric	4000
6-7042	4.0	Electric-Gas	4000
6-7050	4.5	Gas	4000



Black Soap Spray Nozzle, 65°

Soap and chemical spray nozzle designed for a 1/4" quick coupler. Ideal for quick exchange of spray nozzle and spray guns. It delivers a wide spray angle that allows an even and broad application of the soap or chemicals. Connects to all of the most common pressure washer equipment in the industry. 300° F. 4,000 PSI.

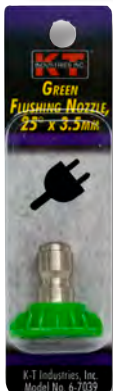
Model No.	Size	Use	PSI
6-7037	3.5	Electric	4000
6-7043	4.0	Electric-Gas	4000



Yellow Chiseling Nozzle, 15°

Chiseling nozzle designed for a 1/4" quick coupler. Ideal for quick exchange of spray nozzles and spray guns. The spray should be directed at a 45° angle to the surface and be used like a scraper to remove paint, grease and dirt. Uses: Surface preparation (removing peeling paint and mildew stains), cleaning gutters and downspouts and bugs from trucks. Connects to all of the most common pressure washer equipment in the industry. 300° F. 4,000 PSI.

Model No.	Size	Use	PSI
6-7038	3.5	Electric	4000
6-7044	4.0	Electric-Gas	4000
6-7052	4.5	Gas	4000
6-7056	5.5	Gas	4000



Green Flushing Nozzle, 25°

Flushing nozzle designed for a 1/4" quick coupler. Ideal for quick exchange of spray nozzles and spray guns. This nozzle is best suited for flushing dirt, mud and grime. Uses: Wet sweeping leaves from walks, curbs and driveways, cleaning stable floors, washing swimming pool bottoms, and cleaning barbecue grills. Connects to all of the most common pressure washer equipment in the industry. 300° F. 4,000 PSI.

Model No.	Size	Use	PSI
6-7039	3.5	Electric	4000
6-7045	4.0	Electric-Gas	4000
6-7053	4.5	Gas	4000



Professional

PRESSURE WASHER PARTS



QUICK CONNECT SPRAY NOZZLES AND FILTERS

White Wash Nozzle, 40°

Wash nozzle designed for a 1/4" quick coupler. Ideal for quick exchange of spray nozzles and spray guns. Its wide spray pattern disperses the water pressure over a large area and is recommended for rinsing and moderate washing. Uses: Washing down aluminum siding, cleaning windows, washing vehicles, spraying sidewalks, driveways, and patios. Connects to all of the most common pressure washer equipment in the industry. 300° F. 4,000 PSI.

Model No.	Size	Use	PSI
6-7040	3.5	Electric	4000
6-7046	4.0	Electric-Gas	4000
6-7054	4.5	Gas	4000



Red Blasting Nozzle, 0°

Blasting nozzle designed for a 1/4" quick coupler. Ideal for quick exchange of spray nozzles and spray guns. It delivers a very concentrated stream of water. Care should be used to avoid gouging wood or damaging fragile surfaces. Uses: Removing weeds from sidewalk cracks, stubborn mineral stains and chewing gum from concrete, masonry, aluminum and steel, caked mud from equipment, and cleaning lawn mower undersides. Connects to all of the most common pressure washer equipment in the industry. 300° F. 4,000 PSI.

Model No.	Size	Use	PSI
6-7041	3.5	Electric	4000
6-7047	4.0	Electric-Gas	4000
6-7055	4.5	Gas	4000



0° to 80° Multi-Regulator Nozzle

Model No. 6-7057

1/4" female national pipe thread inlet. 3.5mm orifice multi regulator nozzle. Used when high and low pressures are needed. This nozzle easily switches between a solid or flat spray pattern without having to change nozzles. The low pressure mode is great for the introduction of downstream soaps. The spray pattern adjusts from a solid 0° to a flat 80° spray pattern with a twist of the nozzle head. 300° F. 3,200 PSI.



Rotating Turbo Nozzle, 4.5mm Orifice

Model No. 6-7058

4.5mm rotating turbo nozzle with 1/4" Female NPT Inlet. Increases cleaning efficiency by more than 200% over a 25° spray nozzle by using a 0° rotating tearing action. This nozzle is ideal for hard surface cleaning such as removing graffiti and caked on mud on equipment. 212° F. 3,600 PSI.

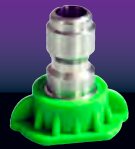


Filter for Turbo Nozzles

Model No. 6-7059

Turbo nozzle filter with 4.5mm orifice and 1/4" male x 1/4" quick connect. Used in combination with KT 6-7058 Turbo Nozzles to protect the nozzles from damage by preventing debris from getting into the nozzle. 190° F. 5,800 PSI.





SEWER NOZZLES



Sewer Nozzle 1/4\" data-bbox="495 188 923 222"/>

Model No. 6-7080

Female national pipe thread x 4.5mm orifice stainless steel sewer nozzle. Slides easily into drain pipes and sewer lines. Great for flushing debris or clearing frozen pipes while attached to a sewer hose. Forward and backward ports in the nozzle blasts into the clogged pipe, breaking up the debris while pulling the hose through the pipe. Made of corrosion resistant stainless steel and designed to be small enough to clean in all the tight spaces. 4,200 PSI.



Sewer Nozzle 1/8\" data-bbox="495 418 923 452"/>

Model No. 6-7081

Female national pipe thread x 4.5mm orifice stainless steel sewer nozzle. Slides easily into drain pipes and sewer lines. Great for flushing debris or clearing frozen pipes while attached to a sewer hose. Forward and backward ports in the nozzle blasts into the clogged pipe, breaking up the debris while pulling the hose through the pipe. Made of corrosion resistant stainless steel and designed to be small enough to clean in all the tight spaces. 4,200 PSI.



Sewer Nozzle, Rotating 1/4\" data-bbox="495 678 889 713"/>

Model No. 6-7085

1/4\" data-bbox="495 731 926 850"/>



Professional

PRESSURE WASHER PARTS



BRASS NIPPLES

Female Screw Nipple, M22M to 1/4" Female NPT

Model No. 6-7009

Female Screw Nipple, M22M to 1/4" Female NPT. Used anywhere high pressure connections are frequently assembled and disassembled, in combination with screw couplers. Connects to all of the most common pressure washer equipment in the industry. Connects to male 1/4" fittings and converts M22 metric thread size to standard thread size. 5,800 PSI.



Male Screw Nipple, M22M to 1/4" Male NPT

Model No. 6-7015

Male Screw Nipple, M22M to 1/4" Male NPT. Used anywhere high pressure connections are frequently assembled and disassembled, in combination with screw couplers. Connects to all of the most common pressure washer equipment in the industry. Connects to female 1/4" fittings and converts M22 metric thread size to standard thread size. 5,800 PSI.



Female Screw Nipple, M22M x 3/8" Female NPT

Model No. 6-7012

Female Screw Nipple, M22M x 3/8" Female NPT. Used anywhere high pressure connections are frequently assembled and disassembled, in combination with screw couplers. Connects to all of the most common pressure washer equipment in the industry. Connects to male 3/8" fittings and converts M22 metric thread size to standard thread size. 5,800 PSI.

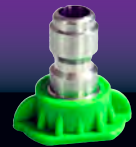


Male Screw Nipple, M22M x 3/8" Male NPT

Model No. 6-7017

Male Screw Nipple, M22M x 3/8" Male NPT. Used anywhere high pressure connections are frequently assembled and disassembled, in combination with screw couplers. Connects to all of the most common pressure washer equipment in the industry. Connects to female 3/8" fittings and converts M22 metric thread size to standard thread size. 5,800 PSI.





QUICK CONNECT COUPLERS AND PLUGS



Quick Coupler 1/4\" data-bbox="482 174 843 209"/>

1/4" male, brass socket quick coupler. Used anywhere high pressure connections are frequently assembled and disassembled. Ideal for quick exchange of spray nozzles and spray guns. Knurling on the socket sleeve allows for easy use. The ball lock design insures a solid connection every time. These quick couplers connect to all of the most common pressure washer equipment in the industry. 5,500 PSI.



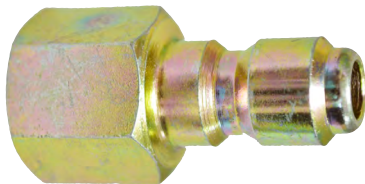
Quick Coupler 1/4\" data-bbox="482 342 868 377"/>

1/4" female, brass socket quick coupler. Used anywhere high pressure connections are frequently assembled and disassembled. Ideal for quick exchange of spray nozzles and spray guns. Knurling on the socket sleeve allows for easy use. The ball lock design insures a solid connection every time. These quick couplers connect to all of the most common pressure washer equipment in the industry. 5,500 PSI.



Quick Coupler Plug 1/4\" data-bbox="482 511 893 546"/>

1/4" Male NPT, plated steel quick connect plug. Used in combination with quick couplers anywhere high pressure connections are frequently assembled and disassembled. Ideal for quick exchange of spray nozzles and spray guns. These quick connect plugs connect to all of the most common pressure washer equipment in the industry. 5,500 PSI.



Quick Coupler Plug 1/4\" data-bbox="482 652 919 687"/>

1/4" Female NPT, plated steel quick connect plug. Used in combination with quick couplers anywhere high pressure connections are frequently assembled and disassembled. Ideal for quick exchange of spray nozzles and spray guns. These quick connect plugs connect to all of the most common pressure washer equipment in the industry. 5,500 PSI.



Quick Coupler Plug 1/4\" data-bbox="482 806 876 841"/>

1/4" quick coupler plug x M22F converter coupling. 5,800 PSI.



Professional

PRESSURE WASHER PARTS



QUICK CONNECT COUPLERS AND PLUGS

Quick Coupler 3/8" Male NPT 4,200 PSI

Model No. 6-7070

3/8" male, brass socket quick coupler. Used anywhere high pressure connections are frequently assembled and disassembled. Ideal for quick exchange of spray nozzles and spray guns. Knurling on the socket sleeve allows for easy use. The ball lock design insures a solid connection every time. These quick couplers connect to all of the most common pressure washer equipment in the industry. 4,200 PSI.



Quick Coupler 3/8" Female NPT 4,200 PSI

Model No. 6-7071

3/8" female, brass socket quick coupler. 4,200 PSI. Used anywhere high pressure connections are frequently assembled and disassembled and are ideal for quick exchange of spray nozzles and spray guns. Knurling on the socket sleeve allows for easy use. The ball lock design insures a solid connection every time. These quick couplers connect to all of the most common pressure washer equipment in the industry.



Quick Coupler Plug 3/8" Male NPT 4,200 PSI

Model No. 6-7075

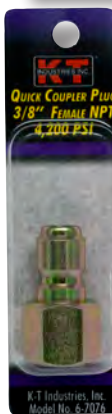
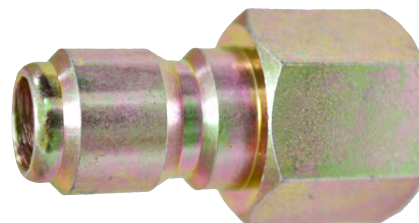
3/8" Male NPT, plated steel quick connect plug. Used in combination with quick couplers anywhere high pressure connections are frequently assembled and disassembled. Ideal for quick exchange of spray nozzles and spray guns. These quick connect plugs connect to all of the most common pressure washer equipment in the industry. 4,200 PSI.

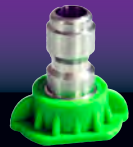


Quick Coupler Plug 3/8" Female NPT 4,200 PSI

Model No. 6-7076

3/8" Female NPT, plated steel quick connect plug. Used in combination with quick couplers anywhere high pressure connections are frequently assembled and disassembled. Ideal for quick exchange of spray nozzles and spray guns. These quick connect plugs connect to all of the most common pressure washer equipment in the industry. 4,200 PSI.





SPRAY GUNS AND SPRAY LANCES HIGH PRESSURE HOSE



Spray Gun, 7 GPM, 3/8" F-NPT Inlet, 1/4" F-NPT Outlet, 4,000 PSI

Model No. 6-7100

3/8" female national pipe thread x 1/4" female NPT output spray gun with forged brass housing. Industry standard and well suited for all pressure washing applications. Designed to be universally comfortable for even small hands. Specially designed heat and chemical resistant seals allow for optimum performance even in the harshest of environments. 300° F. 4,000 PSI.



Molded Lance, 36" Stainless Steel, 1/4" M-NPT Inlet, 1/4" M-NPT Outlet, 5,800 PSI

Model No. 6-7105

36" molded lance with 1/4" male national pipe threads. Designed to conform to the curvature of the hand allowing for comfortable use during long hours. The grip is molded directly to the lance to provide protection and strength. The star shape design of the grip allows for grip cooling during hot water applications. 300° F. 5,800 PSI.



Side Handle for Lance

Model No. 6-7115

Lance side handle is used on any 1/4" pressure washer lance and can be adjusted to the perfect position needed by the user. The lance handle reduces user fatigue. Fits K-T 6-7105, 36" molded lance, or most other 1/4" lances.

1/4" x 25' High Pressure Hose 3,000 PSI

Model No. 6-7120

1/4" x 25' high pressure hose with M22 x M22 female quick screw couplings and bend protectors. Smooth rubber cover. Resistant to cleaning detergents. Perfect hose for medium duty pressure washers. 140° F. 3,000 PSI.



1/4" x 50' High Pressure Hose 3,000 PSI

Model No. 6-7125

1/4" x 50' high pressure hose with M22 x M22 female quick screw couplings and bend protectors. Smooth rubber cover. Resistant to cleaning detergents. Perfect hose for medium duty pressure washers. 140° F. 3,000 PSI.



Professional

PRESSURE WASHER PARTS



HIGH PRESSURE HOSES O RINGS AND TEFLON TAPE

3/8" x 50' High Pressure Hose 3,000 PSI

Model No. 6-7130

3/8" x 50' high pressure hose with M22 x 3/8" male national pipe thread screw couplings and bend protectors. Smooth rubber cover. Resistant to cleaning detergents. Perfect hose for medium duty pressure washers. 250° F. 3,000 PSI.



10 Pc. Replacement O-Rings for 1/4" Quick Couplers

Model No. 6-7160

10 pack replacement 1/4" quick coupler O-rings (Buna®). Fits K-T 6-7060 and 6-7061 1/4" quick couplers.



10 Pc. Replacement O-Rings for 3/8" Quick Couplers

Model No. 6-7161

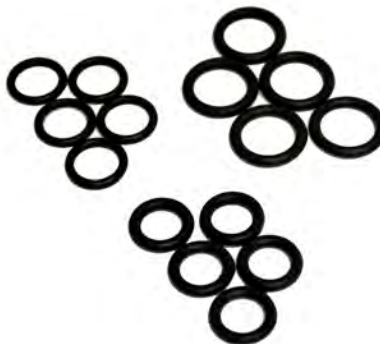
10 pack replacement 3/8" quick coupler O-rings (Buna®). Fits K-T 6-7070 and 6-7071, 3/8" quick couplers.



10 Pc. Replacement O-Ring for Screw Couplers

Model No. 6-7162

10-pack replacement screw coupler O-rings (Viton®). Fit K-T 6-7020, 6-7022, 6-7025 and 6-7026 screw couplings.



15 Pc. O-Ring Set

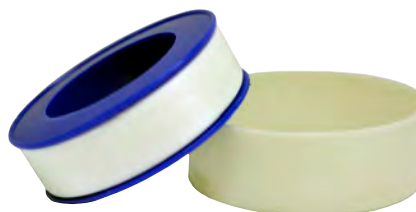
Model No. 6-7163

Contains five each of the most common pressure washer replacement O-rings, K-T 6-7162, Viton® compatible Screw Coupler O-Rings, 6-7161, 3/8" Buna® compatible Quick Coupler O-Rings and 6-7160, 1/4" Buna® compatible Quick Coupler O-Rings.

Teflon Pipe Thread Tape, 1/2" x 520"

Model No. 6-7150

1/2" wide x 520" long Teflon tape used to wrap the threaded ends of pipe to provide a leak free connection.



Professional

PRESSURE WATER CENTER



***TOOLS AND WELDING SUPPLIES
FOR THE PROFESSIONAL***

***Your One Source
For Exceptional
Quality and Service***

Distributed By:

**Version 14.7.1
K-T Industries
P.O. Box 123
3112 Northwest Boulevard
Sheldon, Iowa 51201
Phone (712) 324-5361 Fax (712) 324-2930**

www.ktindustries.net